



NOTICE OF RACE AND SAILING INSTRUCTIONS

Open Dutch Championship

Windsurfing class Long distance

organised by the Round Texel Foundation

under the auspices of the RNWA

DATES AND LOCATIONS

Saturday June 6th, 2026 at Paal 17, Texel

[NP] denotes that a breach of this rule will not be grounds for a protest by a board. This Changes RRS 60.1.

[SP] denotes a rule for which a standard penalty may be applied by the race committee without a hearing". This changes RRS A5.1. The penalties are described in 'Addendum D: Standard penalties'.

1. RULES

- 1.1. Apart from this NOR/SI for Windsurfing there are 2 other documents for the Catamaran and Wing Foil disciplines.
- 1.2. The event is governed by the rules as defined in *Racing Rules of Sailing (RRS)*. The Prescriptions of the RNWA can be found at: <https://www.sailing.org/racingrules/>
- 1.3. The 'Rules for Championships Sailing, Windsurfing and Kiteboarding' (available at reglement-voor-kampioenschappen (watersportverbond.nl) will apply.
- 1.4. If there is a conflict between languages the text in the English language will take precedence.
- 1.5. Every person on a board who has his domicile in the Netherlands shall have the appropriate licence.
- 1.6. Trackers will be used for safety, ensuring a sailor sails the course correctly and scoring purposes.
- 1.7. The tracking devices will be distributed by the OA near the Regatta Office, immediately after the skippers meeting. When a tracker is issued by the OA to a competitor, they are required to sign the sign out-form acknowledging the receipt of the tracker.
- 1.8. [SP] It is mandatory to sail with a tracker. If a board is sailing without a tracker that board will be disqualified by the race committee without a hearing.



- 1.9. [SP] The tracker needs to be returned, in working order, within 1 hour after the competitor has finished (immediately after its own finish) also near the Regatta Office. The return requires acknowledgement via a sign in-form. If the tracker is not signed in, the boat will be scored DNF by the race committee without a hearing. (The OA needs to ensure the safety of an event, missing a tracker means that the board is still on the water and therefore the Rescue will start a search).
- 1.10. [DP][SP] When a competitor fails to return their tracker, this person will have to reimburse the costs of a tracker to the OA. Amount to be reimbursed is 145 euros.
- 1.11. Attaching the tracker to a person: The tracker shall be worn on the body, preferably underneath the wetsuit or vest (not on the board or sail, this will highly increase the risk of losing the tracker).
- 1.12. The GDPR which can be found on the website roundtexel.com

2. ELIGIBILITY AND ENTRY

- 2.1. The event is open to all boards which are approved and registered as a production Formula, Slalom, Free Ride or Race Board.
- 2.2. Boards may enter the event by registering online at <https://www.roundtexel.com/nl/wedstrijd-info/round-texel>. The required fee can be paid during online registration.
- 2.3. To be considered an entry in the event, a board shall complete all registration requirements and pay all fees before June 5 20:00.
- 2.4. Round Texel Windsurfing Classes will sail as one class.
- 2.5. Competitors must be born on, or before, June 6th 2008 to participate in the Round Texel.
- 2.6. Competitors born after June 6th 2008 are only allowed to participate if able to prove that they are capable of competing in the race. The race committee will decide if the proof is sufficient. Prove can be for example: competing in a world championship and finishing in the top 10.
- 2.7. Competitors under 18 years of age (born before June 6th 2008) must return a completed Parent/Guardian Consent Form prior to or at registration. This consent form will be available online www.roundtexel.com.
- 2.7. Upon arrival on site for registration, the competitor must bring the document with QR code received upon online entry.

3. FEES

- 3.1. Entry fee is: € 155

4. QUALIFYING SERIES AND FINAL SERIES

Not applicable

5. SCHEDULE

- 5.1. Registration:

Date	From - To
June 3, 2026	From: 1400 until 1800
June 4, 2026	From: 900 until 1200 Lunch break

The boundaries of the restricted areas are considered obstructions in the sense of the “Definitions” of the RRS.

- 10.4. [SP] If a sailer accesses one of the restricted areas, they will be scored DSQ by the race committee without a hearing.
- 10.5. The course will be as follows

Leg 1 Leg 1 of the course: from the starting line to Gate 1.

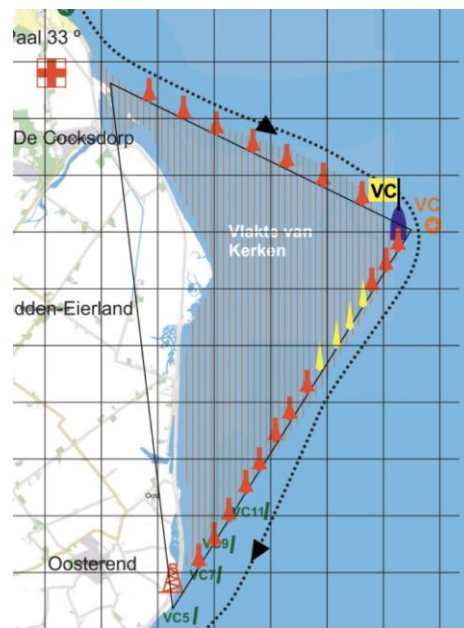
- The course from the start to gate 1 follows the coastline of the island and is approximately 7.5 NM long.
- Boats shall sail through gate 1 near the top of the island, leaving a green inflatable cylindrical buoy placed at the sea end of a 600 meter long breakwater to starboard, and a red inflatable boy to port.
- A race committee boat will be positioned close to the red buoy at the port end of the gate.
- Gate 1 will be approximately 200 meters wide.
- Boats shall not sail more than approximately 1 NM off the coast for safety reasons.

Leg 2 Leg 2 of the course: from Gate 1 to Gate 2.

- After rounding the top of the island, boats shall sail through gate 2, positioned approximately 1 NM after the lighthouse quite close to shore, leaving a green inflatable cylindrical buoy to starboard, and a red inflatable boy to port.
- Gate 2 will approximately be 200 meters wide.

Leg 3 Leg 3 of the course: from Gate 2 to the VC vessel.

- The VC vessel, carrying a yellow flag with the letters ‘VC’, positioned 3.3 NM and at a compass bearing of approximately 123° from Gate 2, shall be left to starboard. There is no orange mark opposite to VC.
- The ‘Vlakte van Kerken’ located southwest of this course, is also a protected area and shall be kept clear. Along the course to the VC vessel, red inflatable skippy-bals will be laid to mark this boarder. These buoys, as well as the line connecting the starboard buoy of gate 2, these yellow buoys and the VC vessel, shall be kept to starboard.



Leg 4 Leg 4 of the course: from the VC vessel to Gate 3 near Oudeschild.

- The compass bearing from the VC vessel towards Gate 3 is approximately 206° and the leg is approximately 7.4 NM long.
- Boats shall sail through gate 3 positioned off the harbour of Oudeschild, leaving a red inflatable cylindrical buoy to port and a green inflatable cylindrical buoy to starboard.
- Gate 3 will be approximately 200 meters wide.
- The ‘Vlakte van Kerken’ now located north west of this course, is again a protected area and shall be kept clear. To mark this area red and yellow inflatable skippy-bals laid on the line from the VC vessel to the ‘IJzeren Kaap’ (an open iron landmark on the island halfway the leg). The yellow skippy-bals will mark shallow water/undepths.



These buoys, as well as the line connecting the VC vessel, these yellow buoys and the 'IJzeren Kaap' shall be kept to starboard.

Leg 5 Leg 5 of the course: from Gate 3 to Gate 4 at the southern tip of the island.

- The course from Gate 3 to Gate 4 follows the coastline of the island and the leg is approximately 5.8 NM long.
- Boats shall sail through gate 4, leaving a green inflatable buoy, approximately 300 meters north of the red navigational mark T2 to starboard and the red navigational mark T2 to port.
- Approximately 1.2 NM into this leg, boats are strongly advised to keep the cardinal buoys 'Stenen Oost' en 'Stenen Zuid' to starboard, to avoid rocks. The Mokbaai is a protected area and shall be kept clear.
- Boats shall be aware of the ferry route crossing their track just over halfway into this leg.

Leg 6 Leg 6 of the course: from Gate 4 to the Finish.

- After passing through gate 4, boats shall follow the coastline of the island to the finish, located just off Paal 17, leaving a buoy with a blue flag to starboard and a RC vessel (small motorboat) carrying a blue flag to port.
- The leg is approximately 5.7 NM long.
- The 'Noorderhaaks', also called 'Razende Bol', located south west of this course, is a protected area and shall be kept clear. To protect this area, the three yellow navigational marks WNB 5, WNB 3 and WNB 1, as well as the line connecting them should be left to port.
- Boats should be aware of the numerous unmarked underwater breakwaters close to shore and of underwater bunkers marked by cardinal navigational buoys.
- Approximately 500 meters before the finish line there is a small shipwreck just on the boundary of the surf.

Participants are advised to study the waters surrounding the island beforehand with the chartviewer of Navionics. https://webapp.navionics.com/?lang=en#boating@8&key=kawblk_%7B%5B

11. MARKS

- 11.1. The gates consist of large coloured cylindrical buoys, the distance between the buoys is approximately 200 meters.

12. CHANGE OF THE NEXT LEG OF THE COURSE

- 12.1. No changes of legs will be made and signalled while racing.

13. START AND FINISH

- 13.1. The start time shall be announced at the skippers meeting.
- 13.2. There will be 2 starting formats "Le Mans start" and "Traditional start on the water". The decision to do the one or the other will be communicated during the skippers meeting and will be based on the amount of competitors. The decision is entirely up to the discretion of the RC.
- 13.3. **Le Mans start:**
The starting line shall be between two beach flags placed on the beach in the starting area. All boards shall position themselves in front of the starting line on the beach



Competitors may start when the green flag is down and after the passing of a 4*4 car in front of them.



The following starting procedure replaces RRS 26.

Signal	Flag	Sound	Time before start
Attention	Orange flag Up	1 sound	30 seconds
Warning	Green flag Up	1 sound	10 seconds
	Orange flag Down	1 sound	5 seconds
Start	Green Flag Down	1 sound	0 seconds

13.4. **Traditional start on the water:**

The starting line is between orange flags on two boats. The boat closest to the beach is the signal vessel.


13.5. [SP] A board that does not start within 15 minutes after her starting signal shall be scored Did Not Start without a hearing.

13.6. The finishing line is between a boat displaying blue  flags and a  mark.

14. **TIME LIMITS [AND TARGET TIMES]**



14.1. Signals at sea will only be displayed by Race Committee boats.

14.2. Displaying a red flag without a sound signal during the race means that the time limit has expired: boards shall leave the racing area and follow the instructions of the Race Committee boats promptly. This changes RRS "Race Signals".

14.3. Displaying flag 'N'  means that the Round Texel race has been abandoned for safety reasons and will not be restarted. All boards have to sail to the nearest beach or harbour immediately. This changes RRS "Race Signals".


14.4. If necessary (for safety reasons) other time limits will be announced ashore or at sea. Establishing the time limits is at the discretion of the RC and will not be grounds for redress.

14.5. No target times will be set for the Round Texel.


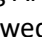
14.6. The  dots () on the map on Addendum C indicates where competitors are allowed to go on shore.


15. **COMMUNICATION AND SIGNALS MADE ASHORE**

15.1. Signals made ashore will be displayed at the flagpoles next to the race office.

15.2. When flag AP  is displayed ashore, '1 minute' is replaced with 'not less than 15 minutes' in the race signal AP.

15.3. Notices to competitors will be posted on the official notice board located at: <https://www.roundtexel.com/>.

15.4. [SP] To alert competitors that they must not go afloat until further notice, flag AP  will be displayed over flag B  with two sounds. To alert boards that they are allowed to go afloat, flag AP over flag B will be removed with one sound. When AP over flag B is hoisted and a board is afloat that board will be disqualified without a hearing by the race committee and will be refused at the next edition of this event.

15.5. [DP] Flag Y  will not be displayed; RRS 40.1 applies always while afloat. This changes RRS Part 4 preamble and RRS 40.1

- 15.6. [DP] While racing, except in an emergency, a board shall not make voice or data transmissions and shall not receive voice or data communication that is not available to all boards.

16. CHANGES TO THE SAILING INSTRUCTIONS

- 16.1. Any change to the sailing instructions will be posted before Friday June 5, 2026 at 2100.

17. [NP][DP] SAFETY REGULATIONS

- 17.1. While afloat all competitors have to wear:

- a. An impact (safety) jacket with a functional floatation device of at least CE50 Newtons standard, or equivalent.
- b. A helmet with the minimum standard EN1385 or EN1077
- c. A wet- or dry suit
- d. An approved personal emergency signal, to be carried on the body. For example:



- 17.2. [DP] A board that retires from a race shall notify the race committee at the first reasonable opportunity.
- 17.3. Boards in distress: A board in distress, must ask for help, if necessary. However, committees or rescue boats take responsibility and assist if a board is unable to race again within 10 minutes, or they will help earlier for safety reasons. If a committee or rescue boats decides to assist a board in distress, this will be seen as help under RRS 41(a).
- 17.4. Check-out and check-in: is crossing the virtual check in line on the water and on the retrieval of the tracker.

18. EQUIPMENT INSPECTION, CLOTHING, EQUIPMENT AND REPLACEMENT

- 18.1. Each board shall have an unique ISAF registration number.
- 18.2. There will be limited equipment inspections carried out during the Round Texel. Official measurers will be available for inspection checks.
- 18.3. During the regatta and directly after finish, any board and its equipment may be subject to examination at any time by the OA.
- 18.4. [DP] When instructed by a race official on the water, a board shall proceed to a designated area for inspection.
- 18.5. [NP][DP] Substitution of sail, board or damaged or lost equipment is not allowed.

19. HEARING REQUESTS

- 19.1. The protest time limit is 45 minutes after the last board finishes



- 19.2. Hearing Requests shall be written on forms available at the race office. Protestors shall use the start number as identification on the hearing Requests form.
- 19.3. Notices will be posted no later than 30 minutes after the protest time limit to inform competitors of hearings in which they are parties or named as witnesses.
- 19.4. Hearings will be held in the protest room, located near the race office, in approximately the order of receipt and as soon as possible and can be held before the end of the protest time limit.
- 19.5. Start numbers of boards, disqualified without a hearing, will be posted on the notice board within 30 minutes after the time of the last finisher. Boards concerned may file a written request for a hearing within one hour of the time the notice is posted. A request for a written decision must be lodged within one hour after being informed of the decision. This changes RRS 63.6.
- 19.6. The time limit for filing a request for reopening is one hour after being informed of the decision. This changes RRS 63.7.

20. **[NP][DP] ADVERTISING**
 - 20.1. Boards shall be required to display advertising chosen and supplied by the OA while a float.
 - 20.2. Boards shall display stickers for this event provided by the OA in 2026, on their board and/or sail.
 - 20.3. [SP] While racing, boards shall display sailing numbers. The OA will check these numbers.
 - 20.4. [DP] If a board has lost one or both start numbers during the race, she must report this to the race office within 30 minutes after finishing in order to avoid errors in the finishing list and disqualification by the RC without a hearing.

21. **[DP] SUPPORT TEAMS**
 - 21.1. Team leaders, coaches and other support personnel shall stay clear of all boats and boards racing in the Round Texel - except in case of emergency from the time of the first preparatory signal for the first class to start until all boats and boards have finished or retired or the RC signals a postponement or abandonment.

22. **TRASH DISPOSAL**
 - 22.1. [DP] Trash may be placed aboard support and RC boats. A penalty for breaking RRS 47 may be less than disqualification if the protest committee so decides.

23. **PRIZES**
 - 23.1. Prizes will only be awarded if the competitor (and not their representatives) is present at the awards ceremony.
 - 23.2. The winning board on the open division acquires the title of "Dutch Champion Formula Windsurfing Long Distance 2026" and a blue pennant.
 - 23.3. The winning board on the women's division acquires the title of "Dutch Champion Formula Windsurfing Long Distance Dames 2026" and a blue pennant.
 - 23.4. Dutch Champion medals will be awarded to each board placed first, second and third.
 - 23.5. Addition prizes for the top three:
 - a. Men
 - b. Women



c. U 21

23.6. There will be separate divisions for windsurfers using a fin and separate divisions for windsurfers using a foil.

Furthermore, additional prizes for the combined board classes (e.g. Raceboard, iQFOIL, Windsurfer LT, Techno 293). Each class with more than 10 registered competitors (one prize), with more than 15 (two prizes) and more than 20 (three prizes).

a. The inventory of the competing boat types shall be done on the 13th of May (board class types registered after that date will not be counted).

24. **INSURANCE**

24.1. Each board has to have a valid third party liability insurance policy, racing on the North Sea included and with a minimum coverage of € 1.500.000 or the equivalent per incident. ¹

24.2. In case a board has caused damage to another board and has been disqualified, relevant info of that board's insurance policy will be made available to the other board.

24.3. Coaches and support boat drivers shall also have valid third party liability insurance with a minimum cover of €1.5 million.

25. **RISK STATEMENT**

25.1. [RRS] 3 states: 'The responsibility for a board's decision to participate in a race or to continue to race is hers alone.' By participating in this event each competitor agrees and acknowledges that sailing is a potentially dangerous activity with inherent risks. These risks include strong winds and rough seas, sudden changes in weather, failure of equipment, board handling errors, poor seamanship by other boards, loss of balance on an unstable platform and fatigue resulting in increased risk of injury. Inherent in the sport of sailing is the risk of permanent, catastrophic injury or death by drowning, trauma, hypothermia or other causes.

25.2. The OA will not accept any liability for material damage or personal injury or death sustained in conjunction with or prior to, during, or after the regatta.

26. **DATA PROTECTION**

26.1. By participating in this event, competitors automatically grant to the OA and the event sponsors the right, in perpetuity, to make, use, and show, at their discretion, any photography, audio and video recordings, and other reproductions of them made at the venue or on the water from the time of their arrival at the venue, until their final departure, without compensation.

27. **ORGANISATION**

27.1. Official vessels will be identified as follows:

- a. Rescue boats will fly a coloured flag with the yellow 'Round Texel' emblem.
- b. Race committee boats will fly a white flag with letters RC.

27.2. Officials

The race manager/PRO is:

Roel Swijnenburg

The race officer is:

Wouter Wessels

¹ Suggested insurance parties: VWDS (www.vdws.de/en/safetytool) or Sportzeker (sportzeker.nl/afsluiten/)



The chairman of the protest committee is: Nicole de By

28. **FURTHER INFORMATION**

Please consult our website for updated information: www.roundtexel.com

For information regarding sign-in contact: wedstrijd@roundtexel.com.

For information regarding accommodation please look at the Round Texel website or contact the Texel Tourist Information Office:

VVV Texel

Postbus 3

1790 AA Den Burg - The Netherlands

Phone: +31 222 314741 (monday till saturday 900 - 1700)

Whatsapp: +31 6 83357827 (monday till saturday 900 - 1700)

Email: info@texel.net

Addendum A: the map of the event parking

Addendum B: the racing area

Addendum C: where to go on shore

Addendum D: Standard penalties



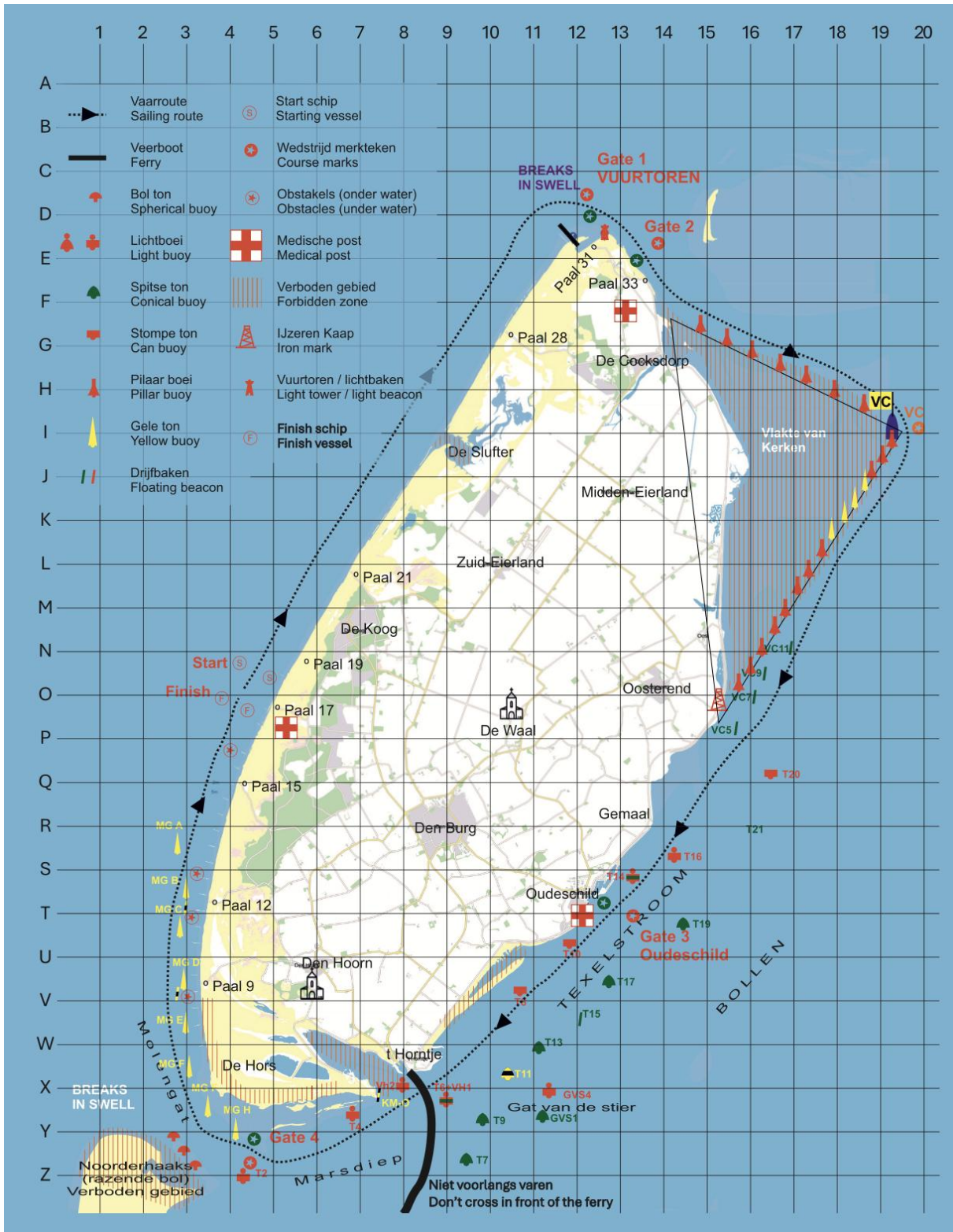
ADDENDUM A - the map of the event parking





ADDENDUM B - the racing area

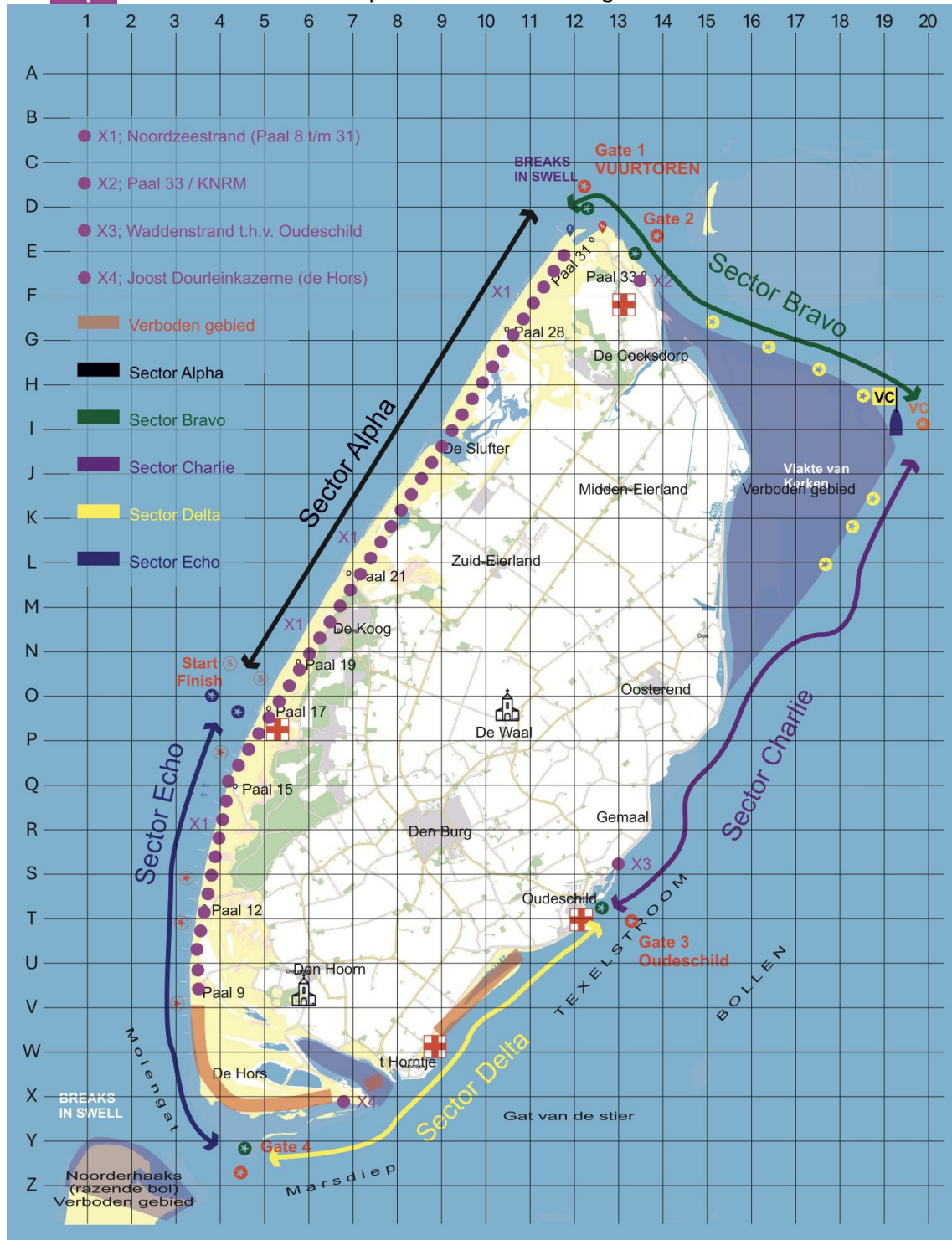
Indication of the competition area.





ADDENDUM C - where to go on shore

The **Purple** dots indicate where competitors are allowed to go on shore.





ADDENDUM D - Standard penalties

NOR/SI number	Penalty
1.8	DSQ
1.9	DNF
1.10	145 euro fine
10.4	DSQ
13.5	DNS
15.5	DSQ and will be refused at the next edition of this event
20.3	5% time penalty