



# NOTICE OF RACE AND SAILING INSTRUCTIONS

## Open Dutch Championship

Catamaran class Long distance

organised by the Round Texel Foundation

under the auspices of the RNWA

### DATES AND LOCATIONS

Saturday June 6th, 2026 at Paal 17, Texel

---

[NP] denotes that a breach of this rule will not be grounds for a protest by a boat. This changes RRS 60.1.

[SP] denotes a rule for which a standard penalty may be applied by the race committee without a hearing". This changes RRS A5.1. The penalties are described in 'Addendum D: Standard penalties'.

#### 1. RULES

- 1.1. Apart from this NOR/SI for Catamaran there are separate NOR/SI for the Windsurfing and Wing Foil disciplines.
- 1.2. The event is governed by the rules as defined in *Racing Rules of Sailing (RRS)*. The Prescriptions of the RNWA can be found at: <https://www.sailing.org/racingrules/>
- 1.3. The 'Rules for Championships Sailing, Windsurfing and Kiteboating' (available at [reglement-voor-kampioenschappen](https://www.watersportverbond.nl/reglement-voor-kampioenschappen) (watersportverbond.nl) will apply.
- 1.4. The Texel Rating Rules will apply.
- 1.5. If there is a conflict between languages the text in the English language will take precedence.
- 1.6. Every person on a boat who has his domicile in the Netherlands shall have the appropriate licence.
- 1.7. Trackers will be used for safety, ensuring a sailor sails the course correctly and scoring purposes.
- 1.8. The tracking devices will be distributed by the OA near the Regatta Office, immediately after the skippers meeting. When a tracker is issued by the OA to a competitor, they are required to sign the sign out-form acknowledging the receipt of the tracker.



- 1.9. [SP] It is mandatory to sail with a tracker. If a boat is sailing without a tracker that boat will be disqualified by the race committee without a hearing.
- 1.10. [SP] The tracker needs to be returned, in working order, within 1 hour after the competitor has finished (immediately after its own finish) also near the Regatta Office. The return requires acknowledgement via a sign in-form. If the tracker is not signed in, the boat will be scored DNF by the race committee without a hearing. (The OA needs to ensure the safety of an event, missing a tracker means that the board is still on the water and therefore the Rescue will start a search).
- 1.11. [DP][SP] When a competitor fails to return their tracker, this person shall have to reimburse the costs of a tracker to the OA. Amount to be reimbursed is 145 euros.
- 1.12. The tracker shall be attached to the vessel using a tie-wrap provided by the OA.
- 1.13. The GDPR which can be found on the website roundtexel.com  
<https://www.roundtexel.com>

## 2. ELIGIBILITY AND ENTRY

- 2.1. The Round Texel is open to all open catamarans with a maximum length of 35 feet and a maximum draught of 0.70 meter (excluding rudders, dagger boards and bowsprit) and every catamaran has to be "beachable".
- 2.2. Each catamaran ('one-off') or boat type will require a valid Texel Rating, with the exception of 2.3.
- 2.3. Boats without a valid Texel Rating can only compete in the ranking for first finishers ('line honors'). For administrative purposes, the Texel Rating number will be assumed to be 50 for these boats.
- 2.4. Any alteration to the design and manufacture of a boat requires the issuance of a new Texel Rating number for that particular boat in accordance with the Texel Rating procedures.
- 2.5. Boats may enter the event by registering online at <https://www.roundtexel.com/nl/wedstrijd-info/round-texel>. The required fee can be paid during online registration.
- 2.6. To be considered an entry in the event, a boat shall complete all registration requirements and pay all fees before *June 5 20:00*.
- 2.7. Competitors must be born on, or before, June 6th 2008 to participate in the Round Texel.
- 2.8. Competitors born after June 6th 2008 are only allowed to participate if able to prove that they are capable of competing in the race. The race committee will decide if the proof is sufficient. Prove can be for example: competing in a world championship and finishing in the top 10.
- 2.9. Competitors under 18 years of age (born before June 6th 2008) must return a completed Parent/Guardian Consent Form prior to or at registration. This consent form will be available online [www.roundtexel.com](http://www.roundtexel.com).
- 2.7. Upon arrival on site for registration, the competitor must bring the document with QR code received upon online entry.

## 3. FEES

- 3.1. Entry fee is: € 190

## 4. QUALIFYING SERIES AND FINAL SERIES



Not applicable

5. **SCHEDULE**

5.1. Registration:

Date	From - To
June 3, 2026	From: 1400 until 1800
June 4, 2026	From: 900 until 1200 Lunch break From: 1230 until 1800
June 5, 2026	From: 900 until 1200 Lunch break From: 1230 until 2000

5.2. Dates of racing: June 6th, 2026.

The back-up day 7th, 2026 is **only** used when conditions on the 6th are unsafe in that way that the safety boats are not allowed to leave the harbour (the race officer will make this decision).

	Number of races	Skippers meeting	First warning signal
<b>Round Texel</b>			
Saturday June 6 <sup>th</sup>	One full round of the island	0645 Location: Waves Festival Tent	Between 0800 and 1100 hrs. (depends on the tide)

6. **CLASS FLAGS**

6.1. The Class flag is: a white flag with the Round Texel logo.

7. **RACING FORMAT**

7.1. The racing format is long distance.

8. **SCORING AND JUDGING**

8.1. The Round Texel is a single race.

9. **VENUE AND RACING AREA**

9.1. The race office is located at Paal 17 (Ruijslaan 94/98, 1796AZ De Koog, Texel) on the beach (it consists of multiple blue porta cabins).

9.2. The normal opening hours of the race office are 1000 – 1800.

9.3. Unless otherwise directed by the organising authority, boats and equipment shall be launched and retrieved from the designated area at the event site.

9.4. The traffic rules, in particular those concerning parking will be strictly enforced.



- 9.5. Addendum A shows the plan of the event venue.
- 9.6. Addendum B shows the location of the racing areas.

10. **OBSTRUCTIONS, RACING AREA AND COURSES**

- 10.1. The course is clockwise around the island Texel and has a length of approximately 65 NM.
- 10.2. The image in Addendum B shows how the course most likely will look. The exact position of the gates are not specified in coordinates.
- 10.3. The course contains several restricted areas, also marked purple in Addendum B:
  - a. "Vlakte van Kerken" (triangle to the west of VC buoy)
  - b. "Mokbaai" (after the Veerhaven)
  - c. "Razende Bol" (area west of buoys WNB-1, WNB-3 and WNB-5)The boundaries of the restricted areas are considered obstructions in the sense of the "Definitions" of the RRS.
- 10.4. [SP] If a sailer accesses one of the restricted areas, they will be scored DSQ by the race committee without a hearing.
- 10.5. The course will be as follows

**Leg 1** Leg 1 of the course: from the starting line to Gate 1.

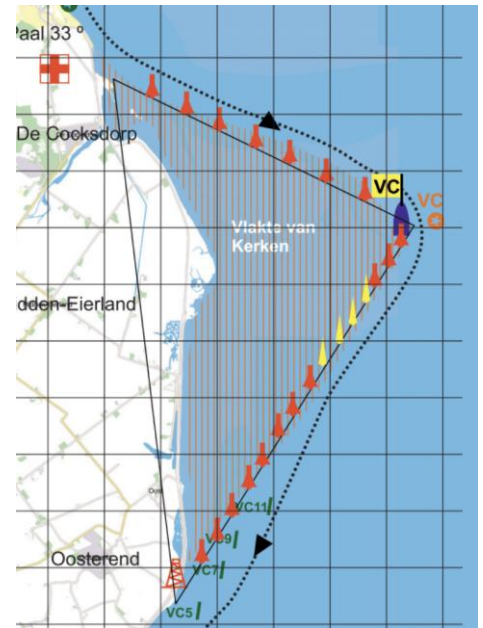
- The course from the start to gate 1 follows the coastline of the island and is approximately 7.5 NM long.
- Boats shall sail through gate 1 near the top of the island, leaving a green inflatable cylindrical buoy placed at the sea end of a 600 meter long breakwater to starboard, and a red inflatable boy to port.
- A race committee boat will be positioned close to the red buoy at the port end of the gate.
- Gate 1 will be approximately 200 meters wide.
- Boats shall not sail more than approximately 1 NM off the coast for safety reasons.

**Leg 2** Leg 2 of the course: from Gate 1 to Gate 2.

- After rounding the top of the island, boats shall sail through gate 2, positioned approximately 1 NM after the lighthouse quite close to shore, leaving a green inflatable cylindrical buoy to starboard, and a red inflatable boy to port.
- Gate 2 will approximately be 200 meters wide.

**Leg 3** Leg 3 of the course: from Gate 2 to the VC vessel.

- The VC vessel, carrying a yellow flag with the letters 'VC', positioned 3.3 NM and at a compass bearing of approximately 123° from Gate 2, shall be left to starboard. There is no orange mark opposite to VC.
- The 'Vlakte van Kerken' located southwest of this course, is also a protected area and shall be kept clear. Along the course to the VC vessel, red inflatable skippy-bals will be laid to mark this boarder. These buoys, as well as the line connecting the starboard buoy of gate 2, these yellow buoys and the VC vessel, shall be kept to starboard.



**Leg 4** Leg 4 of the course: from the VC vessel to Gate 3 near Oudeschild.

- The compass bearing from the VC vessel towards Gate 3 is approximately 206° and the leg is approximately 7.4 NM long.
- Boats shall sail through gate 3 positioned off the harbour of Oudeschild, leaving a red inflatable cylindrical buoy to port and a green inflatable cylindrical buoy to starboard.
- Gate 3 will be approximately 200 meters wide.
- The 'Vlakte van Kerken' now located north west of this course, is again a protected area and shall be kept clear. To mark this area red and yellow inflatable skippy-bals laid on the line from the VC vessel to the 'IJzeren Kaap' (an open iron landmark on the island halfway the leg). The yellow skippy-bals will mark shallow water/undepts. These buoys, as well as the line connecting the VC vessel, these yellow buoys and the 'IJzeren Kaap' shall be kept to starboard.

**Leg 5** Leg 5 of the course: from Gate 3 to Gate 4 at the southern tip of the island.

- The course from Gate 3 to Gate 4 follows the coastline of the island and the leg is approximately 5.8 NM long.
- Boats shall sail through gate 4, leaving a green inflatable buoy, approximately 300 meters north of the red navigational mark T2 to starboard and the red navigational mark T2 to port.
- Approximately 1.2 NM into this leg, boats are strongly advised to keep the cardinal buoys 'Stenen Oost' en 'Stenen Zuid' to starboard, to avoid rocks. The Mokbaai is a protected area and shall be kept clear.
- Boats shall be aware of the ferry route crossing their track just over halfway into this leg.

**Leg 6** Leg 6 of the course: from Gate 4 to the Finish.

- After passing through gate 4, boats shall follow the coastline of the island to the finish, located just off Paal 17, leaving a buoy with a blue flag to starboard and a RC vessel (small motorboat) carrying a blue flag to port.
- The leg is approximately 5.7 NM long.
- The 'Noorderhaaks', also called 'Razende Bol', located south west of this course, is a protected area and shall be kept clear. To protect this area, the three yellow



navigational marks WNB 5, WNB 3 and WNB 1, as well as the line connecting them should be left to port.

- Boats should be aware of the numerous unmarked underwater breakwaters close to shore and of underwater bunkers marked by cardinal navigational buoys.
- Approximately 500 meters before the finish line there is a small shipwreck just on the boundary of the surf.

Participants are advised to study the waters surrounding the island beforehand with the chartviewer of Navionics. [https://webapp.navionics.com/?lang=en#boating@8&key=kawblk\\_%7B%5B](https://webapp.navionics.com/?lang=en#boating@8&key=kawblk_%7B%5B)

**11. MARKS**

11.1. The gates consist of large coloured cylindrical buoys, the distance between the buoys is approximately 200 meters.

**12. CHANGE OF THE NEXT LEG OF THE COURSE**









12.1. No changes of legs will be made and signalled while racing.

**13. START AND FINISH**

13.1. The start time shall be announced at the skippers meeting.

13.2. Start procedure

The following start procedure replaces RRS 26:

Preparation	Signal/Flag	Sound	Time before starting signal
Postponement	Flag AP displayed		2 sounds > 32 minutes
	Flag AP removed		1 sound 31 minutes
Warning and	Red flag displayed		1 sound 30 minutes
Preparatory	Flag P displayed		30 minutes
	Flag P removed		1 sound 10 minutes
Z flag (RRS 30.2)	Z displayed		1 sound 4 minutes
One-minute	Flag Z removed		1 sound 1 minute
Start	Red flag removed		1 sound 0 minutes



13.3. Between the 1-minute signal and the starting signal no part of a boat or its crew shall be in the triangle area that is formed by the ends of the starting line and the lighthouse of Texel. RRS 30.2 is changed, so that the scoring penalty is 25% and any rights to the Line Honors are revoked.

13.4. The starting line is defined as the line between an orange flag on board the starting vessel at the port end (Kustwacht/Coast guard) and orange flag on board the counter starting






vessel at the starboard end (Fishingvessel/startingvessel).


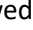

One or both vessels not being anchored will not be ground for redress.

- 13.5. For the purpose of orientation and supporting the official starting signal, Race Committee boats can sail along the starting line. The position of the Race Committee boats will not be ground for redress.
- 13.6. [SP] A boat that does not start within 15 minutes after her starting signal shall be scored DNS without a hearing.
- 13.7. The finishing line is between a boat displaying blue  flags and a  mark.

#### 14. **TIME LIMITS [AND TARGET TIMES]**

- 14.1. Signals at sea will only be displayed by Race Committee boats.
- 14.2. Displaying a red flag without a sound signal during the race means that the time limit has expired: boats shall leave the racing area and follow the instructions of the Race Committee boats promptly. This changes RRS "Race Signals".
- 14.3. Displaying flag 'N'  means that the Round Texel race has been abandoned for safety reasons and will not be restarted. All boats have to sail to the nearest beach or harbour immediately. This changes RRS "Race Signals".
- 14.4. If necessary (for safety reasons) other time limits will be announced ashore or at sea. Establishing the time limits is at the discretion of the RC and will not be grounds for redress.
- 14.5. No target times will be set for the Round Texel.
- 14.6. The  dots (  ) on the map on Addendum C indicates where competitors are allowed to go on shore.

#### 15. **COMMUNICATION AND SIGNALS MADE ASHORE**

- 15.1. Signals made ashore will be displayed at the flagpoles next to the race office.
- 15.2. Notices to competitors will be posted on the official notice board located at: <https://www.roundtexel.com/>.
- 15.3. [SP] To alert competitors that they must not go afloat until further notice, flag AP  will be displayed over flag B  with two sounds. To alert boats that they are allowed to go afloat, flag AP over flag B will be removed with one sound. When AP over flag B is hoisted and a boat is afloat that boat will be disqualified without a hearing by the race committee and will be refused at the next edition of this event.
- 15.4. [DP] Flag Y  will not be displayed; RRS 40.1 applies always while afloat. This changes RRS Part 4 preamble and RRS 40.1
- 15.5. [DP] While racing, except in an emergency, a boat shall not make voice or data transmissions and shall not receive voice or data communication that is not available to all boats.

#### 16. **CHANGES TO THE SAILING INSTRUCTIONS**

- 16.1. Any change to the sailing instructions will be posted before Friday June 5, 2026 at 2100.

#### 17. **[NP][DP] SAFETY REGULATIONS**

- 17.1. While afloat each **boat** shall have on board:
  - a. a compass
  - b. a righting line, at least 8 mm in diameter
  - c. an extra line (for towing) of at least 10 meters and at least 8 mm in diameter

- 17.2. While afloat each **competitor has** to wear:
- An impact (safety) jacket with a functional floatation device of at least CE50 Newtons standard, or equivalent.
  - A wet- or dry suit
  - An approved personal emergency signal, to be carried on the body. For example:



- 17.3. While afloat **all competitors sailing on a foiling catamaran** have to wear
- A helmet with the minimum standard EN1385 or EN1077
- 17.4. [DP] A boat that retires from a race shall notify the race committee at the first reasonable opportunity.
- 17.5. Boats in distress: A boat in distress, must ask for help, if necessary. However, committees or rescue boats take responsibility and assist if a boat is unable to race again within 10 minutes, or they will help earlier for safety reasons. If a committee or rescue boats decides to assist a boat in distress, this will be seen as help under RRS 41(a).
- 17.6. Check-out and check-in: is crossing the virtual check in line on the water and on the retrieval of the tracker.

## 18. **EQUIPMENT INSPECTION, CLOTHING, EQUIPMENT AND REPLACEMENT**

- 18.1. No new Texel Rating numbers will be issued during the Round Texel.
- 18.2. It's recommended that all competitors with a boat without a Texel Rating have their boat measured by an official measurer before registration and can present the measurement form during the registration in order to have their Texel Rating established.
- 18.3. There will be limited equipment inspections carried out during the Round Texel. Official measurers will be available for inspection checks.
- 18.4. During the regatta and directly after finishing, any boat and its equipment may be subject to examination at any time by the OA.
- 18.5. [DP] When instructed by a race official on the water, a boat shall proceed to a designated area for inspection.
- 18.6. [NP][DP] Substitution of sail, boat or damaged or lost equipment is not allowed.

## 19. **HEARING REQUESTS**

- 19.1. The protest time limit is 45 minutes after the last boat finishes.
- 19.2. Hearing Requests shall be written on forms available at the race office. Protestors shall use the start number as identification on the hearing request form.
- 19.3. Notices will be posted no later than 30 minutes after the protest time limit to inform competitors of hearings in which they are parties or named as witnesses.



- 19.4. Hearings will be held in the protest room, located near the race office, in approximately the order of receipt and as soon as possible and may be held before the end of the protest time limit.
- 19.5. Start numbers of boats, disqualified without a hearing, will be posted on the notice board within 30 minutes after the time of the last finisher. Boats concerned may file a written request for a hearing within one hour of the time the notice is posted. A request for a written decision must be lodged within one hour after being informed of the decision. This changes RRS 63.6.
- 19.6. The time limit for filing a request for reopening is one hour after being informed of the decision. This changes RRS 63.7.
20. **[NP][DP] ADVERTISING**
- 20.1. Boats shall be required to display advertising chosen and supplied by the OA while afloat.
- 20.2. Boats shall display stickers for this event provided by the OA in 2026, on their boat and/or sail.
- 20.3. [SP] While racing, boats shall display sailing numbers. The OA will check these numbers.
- 20.4. [DP] If a boat has lost one or both start numbers during the race, she must report this to the race office within 30 minutes after finishing in order to avoid errors in the finishing list and disqualification by the RC without a hearing.
21. **[DP] SUPPORT TEAMS**
- 21.1. Team leaders, coaches and other support personnel shall stay clear of all boats and boats racing in the Round Texel - except in case of emergency from the time of the first preparatory signal for the first class to start until all boats and boats have finished or retired or the RC signals a postponement or abandonment.
22. **TRASH DISPOSAL**
- 22.1. [DP] Trash may be placed aboard support and RC boats. A penalty for breaking RRS 47 may be less than disqualification if the protest committee so decides.
23. **PRIZES**
- 23.1. Prizes will only be awarded if the competitor(s) (and not their representatives) is/are present at the awards ceremony.
- 23.2. The winning boat acquires the title of "Dutch Champion Texel Rating 2026" and a blue pennant.
- 23.3. Dutch Champion medals will be awarded to each boat placed first, second and third.
- 23.4. Based on sailed time:
- first finishers ('line honors', 1<sup>st</sup>, 2<sup>nd</sup> and 3<sup>rd</sup> place)
  - Round Texel Record Attempt
- 23.5. Based on Texel Rating:
- trophies for the overall winners (1<sup>st</sup>, 2<sup>nd</sup> and 3<sup>rd</sup> place) (also ONK titles)
  - fastest single-handed competitor
  - fastest ladies team
  - fastest team under 21 years of age



- e. fastest team of each boat type with more than 10 registered competitors (one prize), with more than 15 (two prizes) and more than 20 (three prizes)
  - (i) The inventory of the competing boat types shall be done on the 13<sup>th</sup> of May (boat types registered after that date will not be counted).

#### 24. **INSURANCE**

24.1 Each boat has to have a valid third party liability insurance policy, racing on the North Sea included and with a minimum coverage of €1.500.000 or the equivalent per incident.

24.1. In case a boat has caused damage to another boat and has been disqualified, relevant info of that boat's insurance policy will be made available to the other boat.

24.2. Coaches and support boat drivers shall also have valid third party liability insurance with a minimum cover of €1 million.

#### 25. **RISK STATEMENT**

25.1. [RRS] 3 states: 'The responsibility for a boat's decision to participate in a race or to continue to race is hers alone.' By participating in this event each competitor agrees and acknowledges that sailing is a potentially dangerous activity with inherent risks. These risks include strong winds and rough seas, sudden changes in weather, failure of equipment, boat handling errors, poor seamanship by other boats, loss of balance on an unstable platform and fatigue resulting in increased risk of injury. Inherent in the sport of sailing is the risk of permanent, catastrophic injury or death by drowning, trauma, hypothermia or other causes.

25.2. The OA will not accept any liability for material damage or personal injury or death sustained in conjunction with or prior to, during, or after the regatta.

#### 26. **DATA PROTECTION**

26.1. By participating in this event, competitors automatically grant to the OA and the event sponsors the right, in perpetuity, to make, use, and show, at their discretion, any photography, audio and video recordings, and other reproductions of them made at the venue or on the water from the time of their arrival at the venue, until their final departure, without compensation.

#### 27. **ORGANISATION**

27.1. Official vessels will be identified as follows:

- a. Rescue boats will fly a coloured flag with the yellow 'Round Texel' emblem.
- b. Race committee boats will fly a white flag with letters RC.

27.2. Officials

The race manger/PRO is:	Roel Swijnenburg
The race officer is:	Wouter Wessels
The chairman of the protest committee is:	Nicole de By
The chairman of the technical committee is:	Geert Ruesink

#### 28. **FURTHER INFORMATION**



Please consult our website for updated information: [www.roundtexel.com](http://www.roundtexel.com)

For information regarding sign-in contact: [wedstrijd@roundtexel.com](mailto:wedstrijd@roundtexel.com).

For information regarding accommodation please look at the Round Texel website or contact the Texel Tourist Information Office:

VVV Texel

Postbus 3

1790 AA Den Burg - The Netherlands

Phone: +31 222 314741 (monday till saturday 900 - 1700)

Whatsapp: +31 6 83357827 (monday till saturday 900 - 1700)

Email: [info@texel.net](mailto:info@texel.net)

**Addendum A: the map of the event parking**

**Addendum B: the racing area**

**Addendum C: where to go on shore**

**Addendum D: Standard penalties**

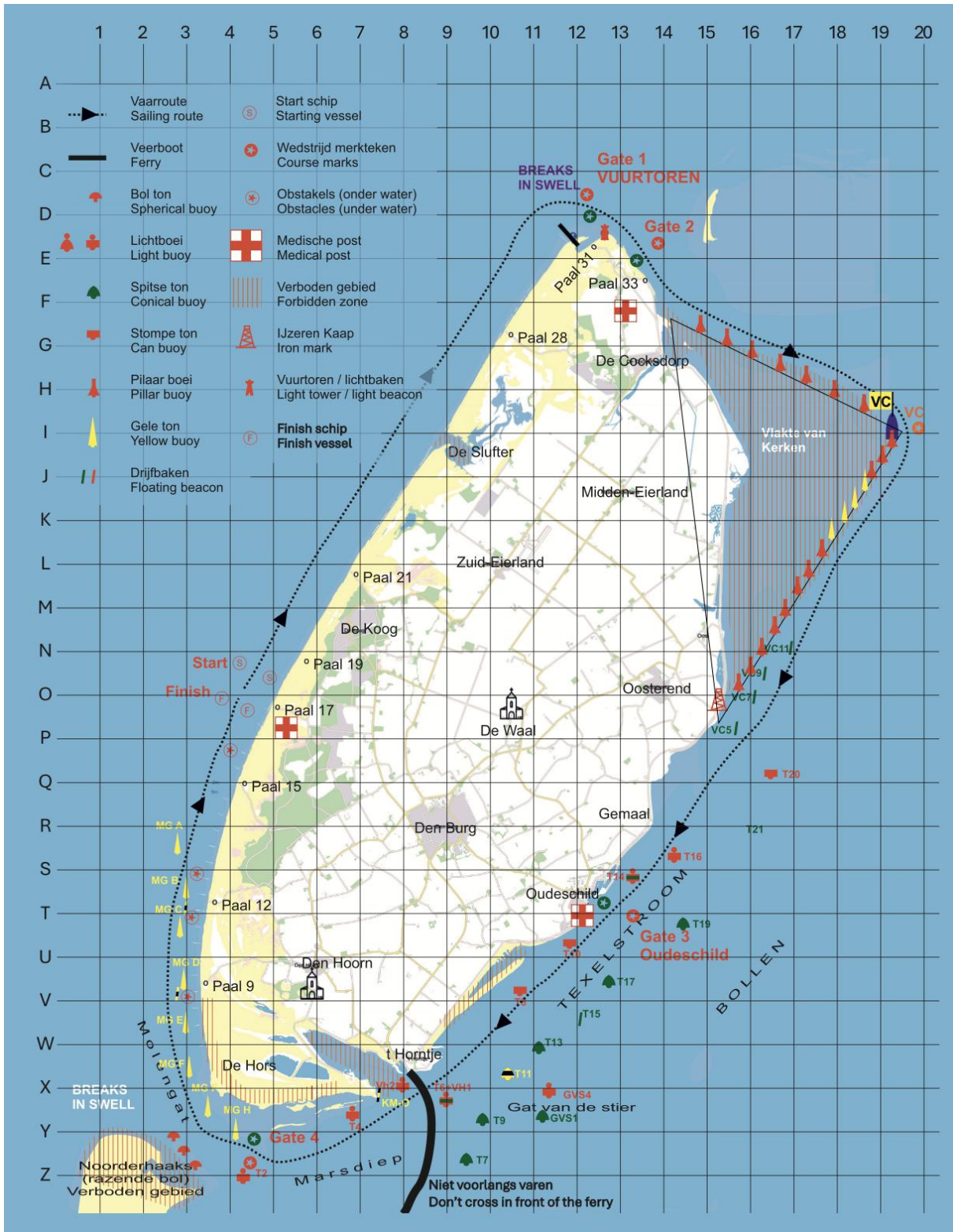
**ADDENDUM A - the map of the event parking**





**ADDENDUM B - the racing area**

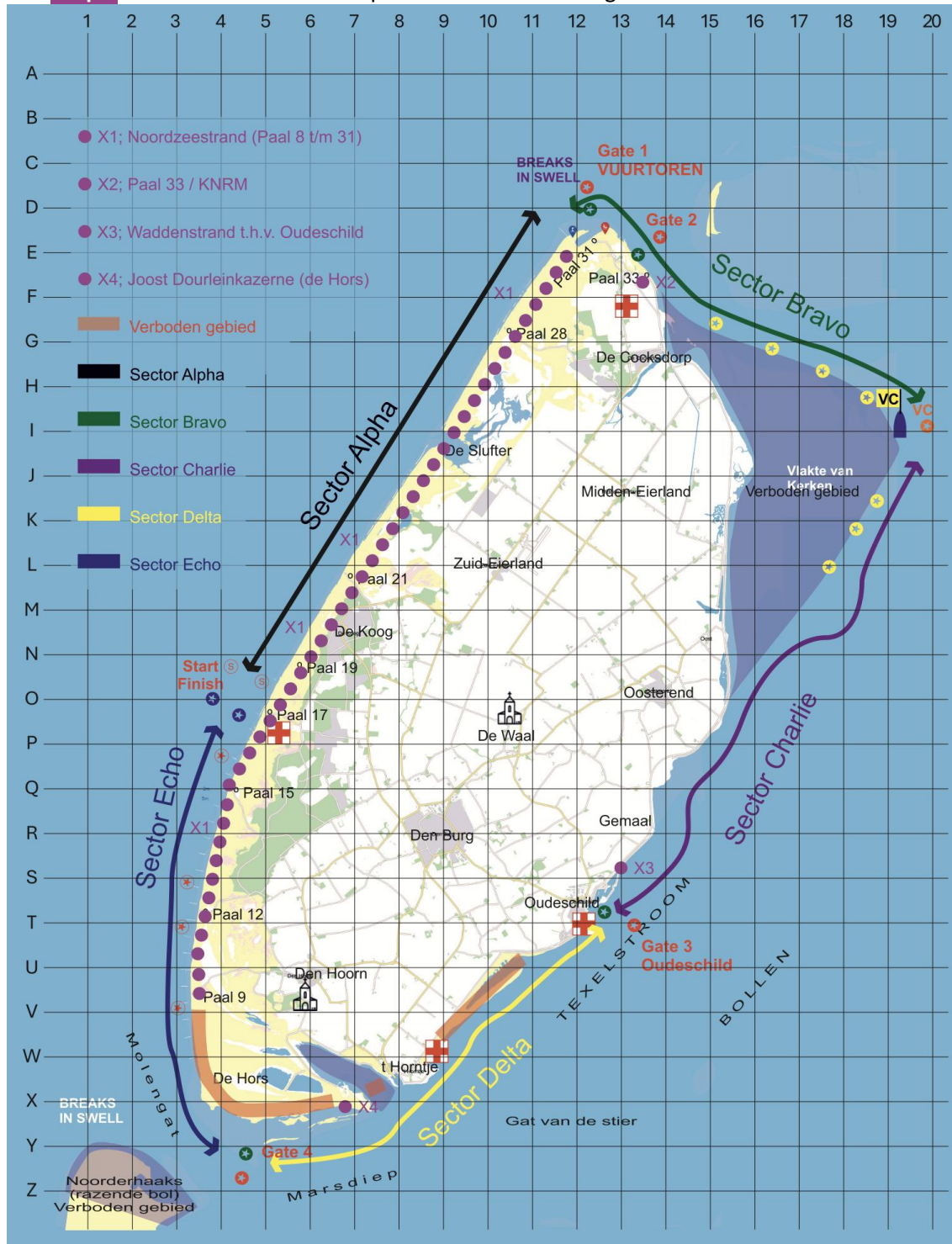
Indication of the competition area:





**ADDENDUM C - where to go on shore**

The **Purple** dots indicate where competitors are allowed to go on shore.





#### ADDENDUM D - Standard penalties

NOR/SI number	Penalty
1.9	DSQ
1.10	DNF
1.11	145 euro fine
10.4	DSQ
13.6	DNS
15.4	DSQ and will be refused at the next edition of this event
20.3	5% time penalty